

Western Australian Museum
Education

2012



Western Australian Museum

• Perth • Maritime • Shipwreck Galleries • Albany • Geraldton • Kalgoorlie-Boulder •



WESTERN AUSTRALIAN
museum

museum.wa.gov.au

Contents

Overview 3



Perth Cultural Centre, James Street, Perth
Phone: (08) 9427 2792
Fax: (08) 9427 2883
Email: education@museum.wa.gov.au

Perth 9



Victoria Quay, Fremantle
Phone: (08) 9431 8455
Fax: (08) 9431 8490
Email: freoedu@museum.wa.gov.au

Maritime 15



Cliff Street, Fremantle
Phone: (08) 9431 8455
Fax: (08) 9431 8490
Email: freoedu@museum.wa.gov.au

Shipwreck
Galleries 21



Museum Place, Batavia Coast Marina, Geraldton
Phone: (08) 9921 5080
Fax: (08) 9921 5158
Email: geraldton.museum@museum.wa.gov.au

Geraldton 27



Residency Road, Albany
Phone: (08) 9841 4844
Fax: (08) 9841 4027
Email: albany@museum.wa.gov.au

Albany 33



17 Hannan Street, Kalgoorlie
Phone: (08) 9021 8533
Fax: (08) 9091 2791
Email: eomog@museum.wa.gov.au

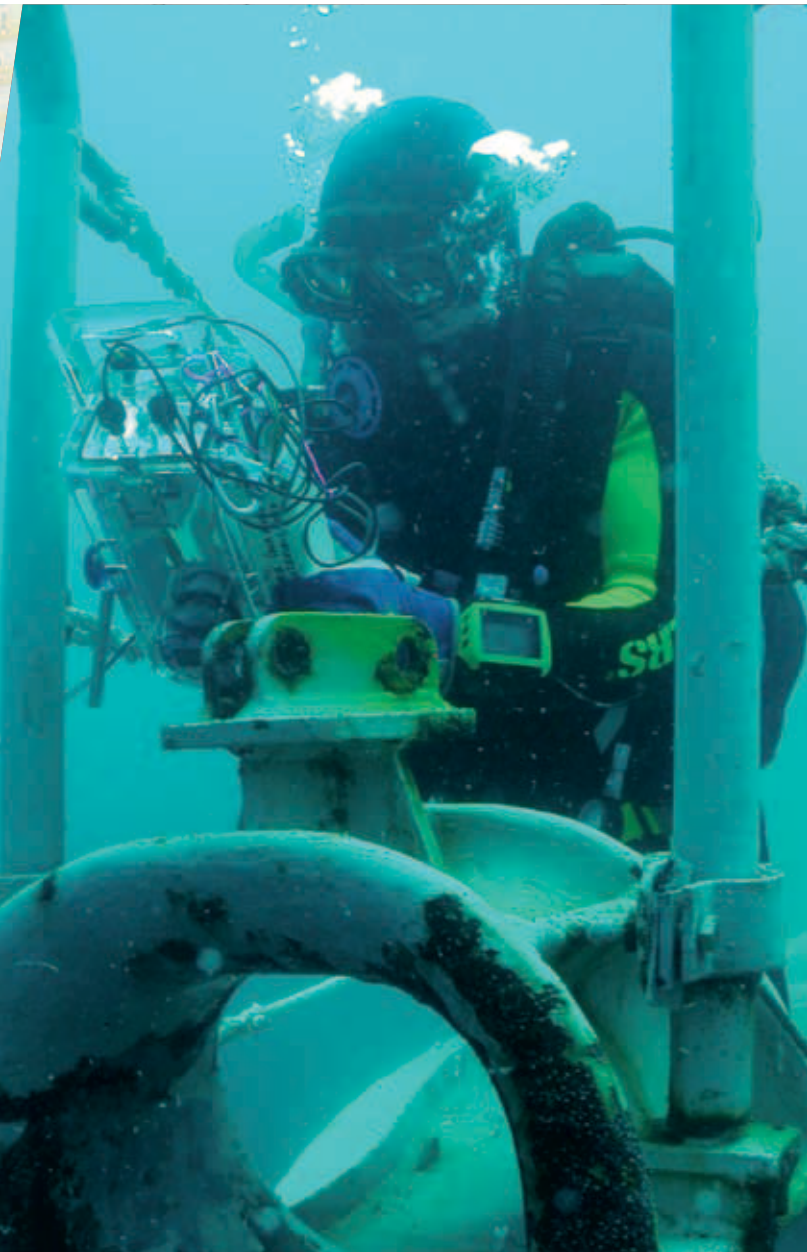
Kalgoorlie-
Boulder 39

Further
information 45

The *Western Australian Museum* is one of the oldest scientific institutions in the state, and for more than 100 years has been at the forefront of enhancing the appreciation and understanding of our unique natural environments and cultural heritage.

There are more than 4.5 million items held by the Museum, including the State Mineral Collection and one of the largest meteorite collections in the southern hemisphere. Last year Museum staff contributed to our understanding of the natural world by describing 61 new animal species.

Each year the Museum makes a major contribution to the collection, conservation and research of the state's natural and social history, its maritime heritage and the cultural heritage of Aboriginal communities in Western Australia.



Western Australian Museum

Choose Your Destination

The *Western Australian Museum* services metropolitan and regional areas with sites located in Perth, Fremantle, Albany, Geraldton and Kalgoorlie-Boulder.



Kalgoorlie-Boulder

Perth



Shipwreck Galleries



Maritime



Albany



Geraldton

Ignite your students' curiosity and take learning beyond the classroom...

The *Western Australian Museum* provides quality excursion experiences which connect students and teachers with our collections and research.

We have a range of facilitated programs for all developmental levels, led by our dedicated team of Education Officers. A variety of self-guided experiences are available for those classes that wish to explore the Museums on their own.



Book now!

Bookings are essential for all school visits (facilitated and self-guided) to the sites of the *Western Australian Museum*.

It is preferable that bookings are made a minimum of two weeks in advance. Please advise at the time of your booking if your group has any special needs or access requirements.

We're beginning the transition!

Please refer to our website to see how our education programs support the Australian Curriculum.

Visit our website for information including:

- site-specific programs
- student and teacher resource materials
- planning and booking your excursion
- Excursion Management Plans for each site
- Teacher Professional Learning opportunities
- special programs
- permanent and temporary exhibitions



museum.wa.gov.au/education

Western Australian Museum

Perth

Visit the *Western Australian Museum – Perth* and discover the rich history of our buildings and collections.

The Museum is conveniently located in the *Perth Cultural Centre* and within walking distance to the Perth train station. Schools might like to consider combining their Museum excursion with a visit to the *Art Gallery of Western Australia*, the *State Library of Western Australia* or the *State Theatre Centre of Western Australia*.

Museum Highlights

- Have a close encounter with ancient fossils in the awesome *Diamonds to Dinosaurs*.
- Step back in time and explore the Victorian-era *Mammal Gallery*, with specimens over 100 years old.
- Visit the *Butterfly Gallery*, and see a dazzling array of beautiful butterflies of many colours and sizes.
- Discover the diversity of Western Australia's Aboriginal cultures in the *Katta Djinoong* gallery.
- Explore historic buildings like the *Old Gaol*, completed in 1856.
- Visit the *Discovery Centre* and see our amazing collection of live reptiles, amphibians and insects.



Western Australian Museum – Perth
Perth Cultural Centre, James Street, Perth
Open 9:30am - 5:00pm on school days

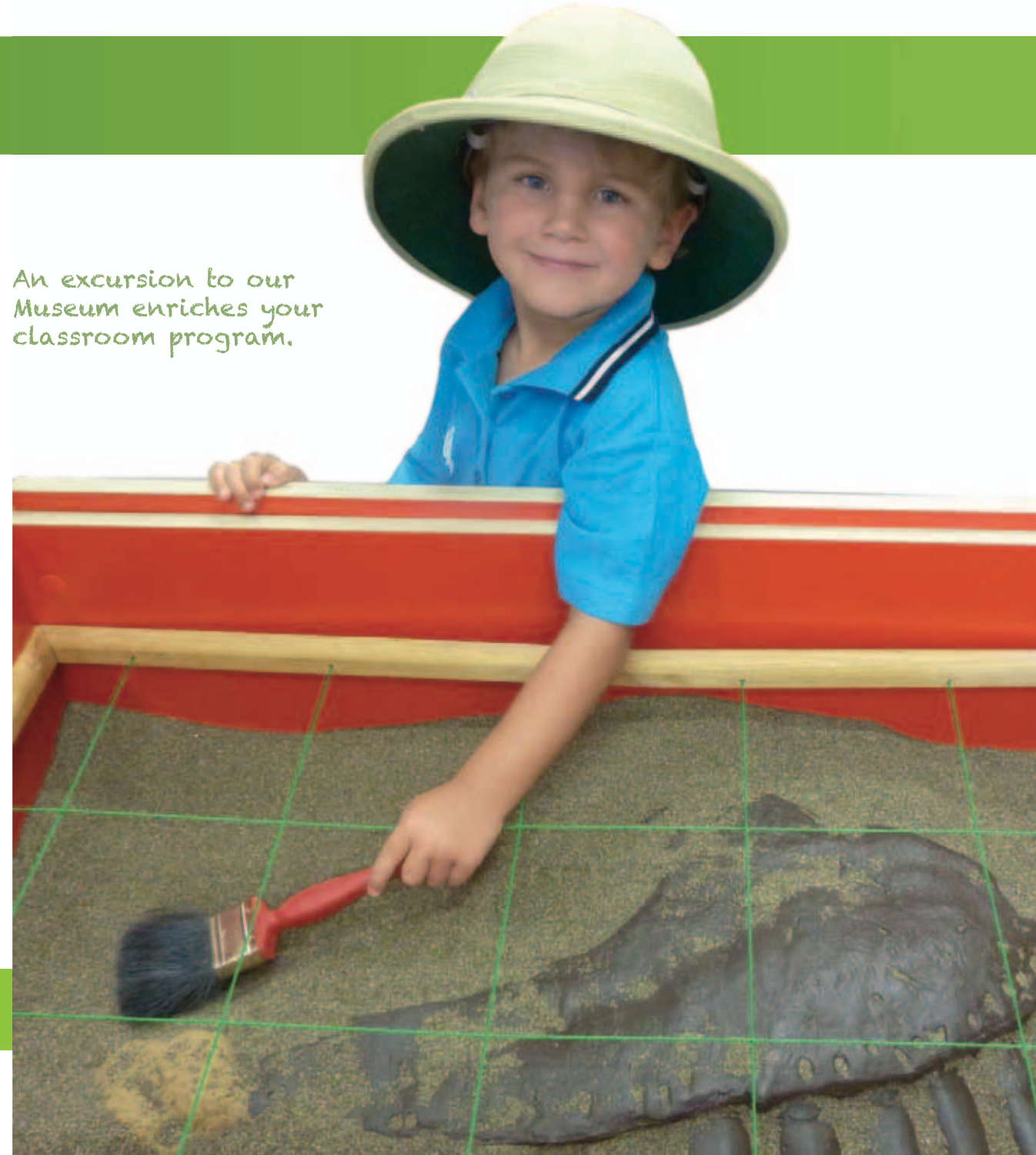


Our Education Officers will take students on a memorable learning adventure, bringing the exhibitions and objects of the *Western Australian Museum – Perth* to life with experiences that will inform, entertain and inspire.

Where else can your students unearth a buried T-Rex fossil, reconstruct the face of an extinct predator, wrap an Egyptian mummy, examine Aboriginal artefacts, discover amazing animal species or travel back in time to explore the past?



An excursion to our Museum enriches your classroom program.



Excursion Options

Facilitated Programs:

All facilitated programs are led by an Education Officer and must be booked in advance. Programs occur daily at 9:45am, 11:00am and 12:15pm and are approximately one hour in duration, depending on the age of the students.

We recommend that you also allow additional time to explore the galleries in the Museum. You may like to supplement your visit with self-guided resources.

Self-guided Gallery Exploration:

Visit the Museum and explore the galleries in small groups at your own pace.

Self-guided *Museum Explorer Experience* (K-3)

Explore our galleries with one of our interactive story books, made just for little explorers and their adult helpers.

Program Costs

Facilitated Programs:

\$5.00 per student (including GST).

Self-guided Gallery Exploration:

Entry by donation.

Self-guided *Museum Explorer Experience* (K-3)

\$2.00 per student (including GST).

Further Information

Please refer to our website for information and resources relating to school excursions.

museum.wa.gov.au/education

Excursion Bookings

Western Australian Museum – Perth
Perth Cultural Centre, James Street, Perth
(08) 9427 2792
education@museum.wa.gov.au



K - 3 Early Childhood

We Dig Dinosaurs

S Palaeontology

How do we know everything that we know about dinosaurs? Reveal, reconstruct and investigate fossils and other prehistoric evidence, just like a real palaeontologist.

Knowing Nature

S Biodiversity

How are living and non-living things connected in a healthy ecosystem? Explore parts of a wetland environment through the eyes of a native species, and use problem-solving skills to recreate a fauna-friendly habitat in an urban environment.

Danjoo Kattadjin – Learning Together

S&E Aboriginal Culture

How do Aboriginal families share knowledge about culture and Country? Explore stories, art and play to discover how children learn to understand the land and look after each other.

In the Olden Days

S&E WA History

How was life in the olden days different to now? Examine family life in the early 1900s by investigating old photos, historical artefacts and other objects.

Museum Explorer

Self-guided Experiences

Explore our galleries with one of our interactive story books, made just for little explorers and their adult helpers. Please refer to our website for available topics.

4 - 7 Middle Childhood

Fossil Forensics

S Palaeontology

How can palaeontological evidence reveal information about an extinct animal? Help solve a prehistoric puzzle through a hands-on investigation of a unique Australian fossil.

Threatened or Thriving

S Biodiversity

Why are some of our native species under threat? Participate in interactive challenges to investigate the environmental impacts of fire, disease, habitat loss and other threatening processes.

Unwrapping Egypt

S&E Ancient History

How did Ancient Egyptian beliefs influence their burial practices? Experience mummification and other funerary practices for an Egyptian citizen's journey into the afterlife.

Boojar Kattadjin – Learning Country

S&E Aboriginal Culture

How do Aboriginal people use, care for and protect natural resources? Investigate tools and other objects to discover how local resources are used in innovative and sustainable ways.

Preserving our Past

S&E WA History

How can we use historical sources to learn about the past? Explore the past by investigating a range of historical artefacts and sources, and learn about the importance of preserving our heritage.

Wild About Wetlands

S Biodiversity

How can we tell if a wetland is healthy? Use science equipment to test water quality and explore the various elements that have an effect on the health of wetland ecosystems.

8 - 10 Early Adolescence

Self-guided Experiences

S S&E

Please visit our website for our range of self-guided topics and resources.

11 - 12 Late Adolescence

Self-guided Experiences

S S&E

Please visit our website for our range of self-guided topics and resources.



For more information on our programs visit us online: museum.wa.gov.au/education



Visit the *Western Australian Museum – Maritime* and take a journey through our nautical history.

The Maritime Museum is located on Victoria Quay in Fremantle, in the heart of the historic working port. There are six themed galleries inside the Museum, showcasing iconic vessels such as *Australia II* and Jon Sanders' *Parry Endeavour*. Schools might like to consider combining their Museum excursion with a visit to the *Western Australian Museum – Shipwreck Galleries*, for a whole day's experience of Fremantle.



Western Australian Museum –
Maritime

Victoria Quay, Fremantle

Open 9:30am - 5:00pm on school days

Museum Highlights

- Discover the story of Fremantle Harbour in the *Fremantle and Swan River* gallery.
- Learn about how people muck about in the water in the *Tin Canoe to Australia II* gallery.
- Find out about our fishing heritage in the *Hooked on Fishing* gallery and see the beautiful pearling lugger *Trixen*.
- In the *Indian Ocean* gallery, imagine being inside a 15th century Middle Eastern market place.
- See the wall of cargoes, and hear the story of whaling in the *Cargoes* gallery.
- In the *Naval Defence Gallery*, learn about protecting Australia in times of war and peace, and see a replica WW1 submarine conning tower.
- Older students can be guided on board the Submarine HMAS *Ovens* to imagine life on board the silent world of submarines.

Come and journey through Western Australia's maritime history as you explore the many historic objects, boats and stories with our engaging Education Officers and Volunteer Guides.

Learn how boats float, imagine sailing around the world alone, and come aboard the 100 year-old ferry *Valdura* inside the Museum! Marvel at the winged keel of *Australia II* and see the awesome Submarine HMAS *Ovens*. View the passing parade of ships in busy Fremantle Harbour, peruse the *Welcome Walls* and learn about the migrants who helped shape this state.



Excursion Options

Facilitated Programs:

All facilitated programs are led by our Education Officers or trained Volunteer Guides and must be booked at least two weeks in advance. Program duration varies between one and two hours, depending on the program and the age of students.

Self-guided Experiences:

Visit the museum and explore the galleries in small groups at your own pace. Self-guided visits must be booked in advance.

Program Costs

Facilitated Programs:

\$4.00 - \$5.00 per student (including GST).

Self-guided Experiences:

\$3.00 per student (including GST).

Further Information:

Please refer to our website for information and resources relating to school excursions.

museum.wa.gov.au/education

Excursion Bookings:

Western Australian Museum – Maritime
Victoria Quay, Fremantle

(08) 9431 8455

freoedu@museum.wa.gov.au

K - 3 Early Childhood

About Boats

S S&E T&E *Marine Vessels*

Discover the different boats in our Museum from a dug-out canoe to *Australia II*. Learn how they work, what they're made of and what they're used for.

4 - 7 Middle Childhood

New Home, New Country

S&E *WA History*

Discover the challenges of migrating to a new land and how migrants have shaped Australia's lifestyle, culture and identity.

Sustainable Seas

S S&E *Environment*

Learn how people have utilised the ocean's resources in both sustainable and unsustainable ways.

Life Beneath the Waves

S S&E T&E *Maritime History Marine Vessels*

Tour the Submarine HMAS *Ovens*, imagine life on board the silent world of submarines, and learn about Fremantle's role as a secret submarine base during World War II.

General Tour

S S&E T&E *Maritime History Marine Vessels*

Explore the galleries on a guided tour of the Museum with one of our volunteer guides. Experience the grandeur of *Australia II*, be amazed by Jon Sanders' record breaking voyage, and step back in time aboard the ferry *Valdura*.

8 - 10 Early Adolescence

Life Beneath the Waves

S S&E T&E *Maritime History Marine Vessels*

Tour the Submarine HMAS *Ovens*, imagine life on board the silent world of submarines, and learn about Fremantle's role as a secret submarine base during World War II.

General Tour

S S&E T&E *Maritime History Marine Vessels*

Explore the galleries with a guided tour of the Museum. Guided tours can also focus on specific themes within the galleries (subject to availability).

11 - 12 Late Adolescence

Life Beneath the Waves

S S&E T&E *Maritime History Marine Vessels*

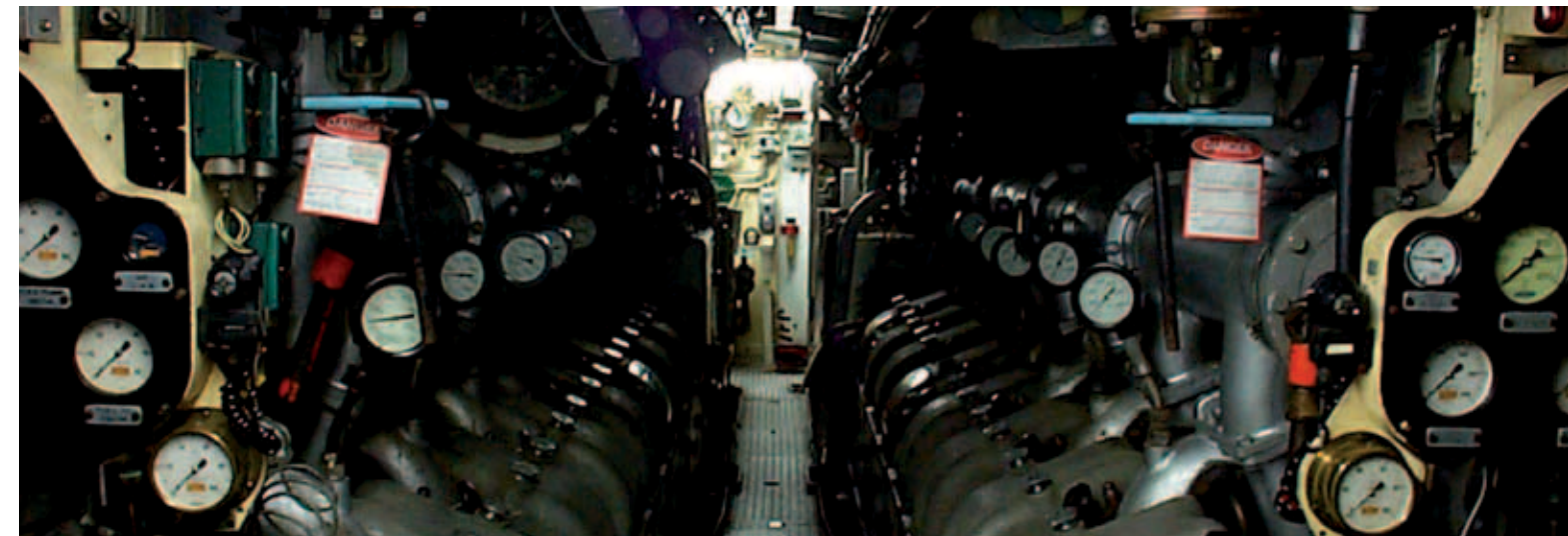
Tour the Submarine HMAS *Ovens*, imagine life on board the silent world of submarines, and learn about Fremantle's role as a secret submarine base during World War II.

Guided Tours

Explore the galleries with a guided tour of the Museum. Guided tours can focus on specific themes within the galleries and can be tailored for Marine & Maritime Technology, History, Tourism and Food Science students (subject to availability).



For more information on our programs visit us online: museum.wa.gov.au/education



Western Australian Museum

Shipwreck Galleries

Built by convicts in the 1850s, the *Western Australian Museum – Shipwreck Galleries* is one of the most important maritime archaeology museums in the southern hemisphere.

The Museum is located within Fremantle's historic West End precinct. It is home to hundreds of shipwreck relics from Western Australia's maritime past, from the 17th century to the early part of last century. Schools might like to consider combining their Museum excursion with a visit to the *Western Australian Museum – Maritime*, for a whole day's experience of Fremantle.



Museum Highlights

- Learn about the first European contact with the Australian coast and see artefacts left behind by early explorers, including the original pewter plate left by Willem de Vlamingh in 1697.
- Hear stories about the spice trade and see relics from famous shipwrecks along the Western Australian coast including the *Zuytdorp*, *Zeewijk* and *Vergulde Draeck* in the *Dutch Wrecks* gallery.
- See first hand the spectacular reconstructed hull timbers of the Dutch ship *Batavia* – infamous for the mutiny and murder of its passengers and crew in 1629.



Western Australian Museum –
Shipwreck Galleries
Cliff Street, Fremantle

Open 9:30am - 5:00pm on school days



Uncover tales of exploration, disaster, mutiny and survival as your class explores Australia's earliest shipwrecks with our experienced Education Officers and Volunteer Guides.

Trace the extraordinary voyages of the spice traders and the race to discover the Great South Land. In our interactive programs, learn how to load and fire a replica cannon, and imagine life aboard a 17th century sailing ship. Learn how boats float, and build and race your own model boat. Imagine you are a marine archaeologist, handle real artefacts and unlock the mysteries of the deep.



Our education experiences reach beyond the collections with lively presenters, engaging activities, fascinating facts and objects to examine.

Excursion Options

Facilitated Programs:

All facilitated programs are led by our Education Officers or trained Volunteer Guides and must be booked at least two weeks in advance. Program duration varies between one and two hours, depending on the program and the age of students.

Self-guided Experiences:

Visit the museum and explore the galleries in small groups at your own pace. Self-guided visits must be booked in advance.

Program Costs

Facilitated Programs:

\$5.00 - \$8.00 per student (including GST).

Self-guided Experiences:

Entry by donation
(suggested donation - \$2 per child)

Further Information:

Please refer to our website for information and resources relating to school excursions.

museum.wa.gov.au/education

Excursion Bookings:

Western Australian Museum –
Shipwreck Galleries
Cliff Street, Fremantle

(08) 9431 8455
freoedu@museum.wa.gov.au



K - 3 Early Childhood

Pirate's Apprentice

S& *Maritime History*

Clean, load and 'fire' a cannon, see real treasure and learn about shipboard life and shipwrecks.

4 - 7 Middle Childhood

Exploration and Discovery

S&E *WA History Maritime History*

Follow the journeys of the early European explorers who charted the coast of the Great South Land.

Shipwreck Scientists

S T&E *Science and Technology*

Become a shipwreck scientist for a day in this hands-on program. Examine shipwreck artefacts and learn conservation techniques that enable 400 year old artefacts to survive the journey from the bottom of the sea to a museum display.

Don't Rock the Boat

S T&E *Science and Technology*

Build and race your own boat in our test tank. Learn how boats work and what makes them go faster.

European Settlement Walking Tour

S&E *WA History*

Walk in the footsteps of the early European settlers and imagine the conditions that they faced.

General Tour

S&E *Maritime History Maritime Archaeology*

Hear stories of the spice trade and see relics from famous shipwrecks along the WA coast on a tour with one of our volunteer guides. Learn about the *Batavia* and other Dutch shipwrecks and tales of mutiny and survival.

8 - 10 Early Adolescence

Maritime Archaeology

S S&E *Maritime Archaeology*

Handle, describe and record features of real artefacts and tour the Shipwreck Galleries to discover the stories behind the artefacts from famous shipwrecks on our WA coast.

European Settlement Walking Tour

S&E *WA History*

Imagine the conditions faced by early European settlers. Starting at the convict built Shipwreck Galleries, this walking tour includes Bather's Beach and the Round House.

General Tour

S S&E *Maritime History Maritime Archaeology*

Hear tales of exploration, survival and mutiny as we trace the extraordinary voyages of the spice traders and the European discovery of the Great South Land. Guided tours can also focus on specific themes within the galleries (subject to availability).

11 - 12 Late Adolescence

Maritime Archaeology

S S&E *Maritime Archaeology*

Handle, describe and record features of real artefacts and tour the *Shipwreck Galleries* to discover the stories and artefacts behind famous shipwrecks on the WA coast.

Guided Tours

Tours can focus on specific themes within the galleries and can be tailored to the Marine and Maritime Technology Course (subject to availability).



For more information on our programs visit us online: museum.wa.gov.au/education



Western Australian Museum

Overlooking the Indian Ocean, the *Western Australian Museum – Geraldton* celebrates the rich heritage of the land, sea and people of the Mid West region.

Discover ancient landforms, Yamaji history and culture, and the region's natural landscapes and marine environment. Find out how more recent European exploration and settlement has developed the Mid West including the agriculture, fishing, mining and science industries.



Western Australian Museum – Geraldton
Museum Place, Batavia Coast Marina, Geraldton

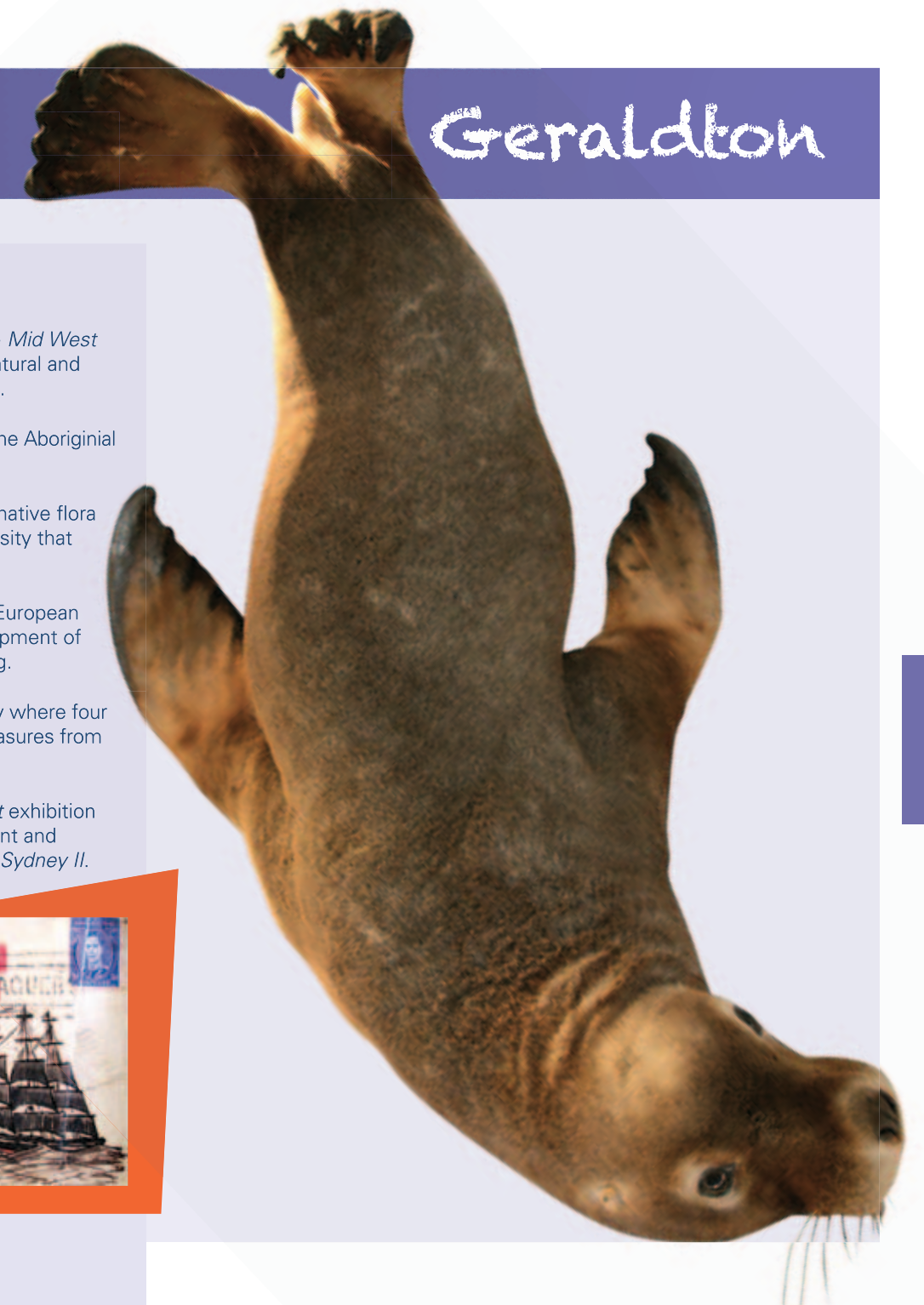
Open 9:30am - 4:00pm on school days

Museum Highlights

- Take a journey through the *Mid West* gallery and discover the natural and social history of the region.
- Be intrigued by the life of the Aboriginal people.
- Be amazed by the unique native flora and fauna and the biodiversity that exists in the region.
- Discover the influence of European settlement and the development of mining, farming and fishing.
- Visit the *Shipwrecks* gallery where four shipwrecks reveal their treasures from the deep.
- View the *Pride of the Fleet* exhibition and experience the poignant and personal stories of HMAS *Sydney II*.



Geraldton



Join our Education staff for fascinating stories of shipwrecks and mutineers, cameleers and stockmen, miners and the Aboriginal people of the region that will keep students captivated during their visit to the *Western Australian Museum – Geraldton*.

Natural history displays will inspire young minds and create a better understanding of our ever-changing environment. Writing with pen and ink, fishing for dinner, searching for gold and sending Morse code signals are just some of the experiences enjoyed by visiting students.

2012 Clem Burns Heritage Award

Now in its 23rd year, the Clem Burns Heritage Award is an annual competition conducted by the *Western Australian Museum - Geraldton*.

Open to all primary students in the Mid West, it promotes an understanding of the rich natural and cultural heritage of the region. With 2012 declared *International Year of Sustainability for All* by the United Nations, the award for 2012 will focus on sustainable energy. Details will be forwarded to schools during Term 1.



Excursion Options

Facilitated Programs:

All facilitated programs are led by the Education Officer and require booking in advance.

Most programs are of one hour duration however it is suggested that additional time is allowed for students to further explore the Museum.

Self-guided Experiences:

Groups are welcome to visit the Museum and proceed at their own pace. Bookings are required for self-guided visits.

Program Costs

Facilitated Programs:

\$4.00 per student (including GST).

Self-guided Experiences:

Entry by donation.

Further Information:

Please refer to our website for information and resources relating to school excursions.

museum.wa.gov.au/education

Excursion Bookings:

Western Australian Museum – Geraldton
Museum Place, Batavia Coast Marina

(08) 9921 5080

geraldton.museum@museum.wa.gov.au

Alinta Wind Farm, Walkaway
Photograph courtesy of Alinta

Programs Overview

Geraldton

K - 3 Early Childhood

Salty Seas

S S&E T&E *Biodiversity*

Take part in a fun-filled activity session to learn about the marine life of the Mid West.

Pioneer Days

H&PE S&E T&E *WA History*

Enjoy a trip back to colonial times and discover what life was like one hundred years ago.

Traditional Times

H&PE S&E *Aboriginal Culture*

Discover the bush food, medicine and sustainable ways of the Aboriginal people of the Mid West.

We Dig Dinosaurs

S *Palaeontology*

Become a palaeontologist for the day! Unearth a buried T-Rex fossil, sieve, brush and chisel through an activity-based program. Discover fascinating facts about the Mid West from millions of years ago.

4 - 7 Middle Childhood

Pride of the Fleet

S S&E T&E *WA History Maritime History*

An interactive session designed to complement student research on HMAS *Sydney II*.

Shipwreck Stories

H&PE S&E T&E *WA History Maritime History*

True stories to capture the imagination of students visiting the *Shipwrecks* gallery.

Sustainable Seas

S S&E T&E *Environment*

Investigate the role individuals can play in the sustainable use of the sea.

Camels, Coaches and Claims

H&PE S&E T&E *WA History Mining and Industry*

Search for gold and learn about mateship, jubilation and despair on the Murchison Goldfields in the 1890s.

Olden Days School Ways

E M S&E *WA History*

Experience school life from the past through fun-filled activities.

The Geraldine Connection

H&PE S&E *Mining and Industry*

The intriguing story of Western Australia's first mining boom which took place in the Mid West in the 1850s.

Gallery Gazing

A E *Viewing in Context*

Interpret how objects, media, lighting, text, images and music are used by museums to appeal to audiences.

8 - 10 Early Adolescence

Conflict in the Mid West

S&E *WA History Aboriginal Culture*

A little known part of our history which describes the impact of the pastoral industry on the local Aboriginal population.

Pride of the Fleet

S S&E T&E *Maritime History*

An interactive session designed to complement student research on HMAS *Sydney II*.

Shipwreck Stories

H&PE S&E T&E *Maritime History*

Explore the challenges faced by the mighty VOC in their pursuit of the spice trade in the Dutch East Indies.

The Geraldine Connection

H&PE S&E *Mining and Industry*

The intriguing story of Western Australia's first mining boom which took place in the Mid West in the 1850s.

Mid West Landscape and Resources

S&E *Mining and Industry*

What is it about the Mid West region that has yielded rich resources for thousands of years? Explore the unique landscape of the Mid West from the creation of the earth billions of years ago to the mining development occurring in the region today.

Gallery Gazing

A E *Viewing in Context*

Interpret how objects, media, lighting, text, images and music are used by museums to appeal to audiences.

11 - 12 Late Adolescence

Mid West Landscape and Resources

S&E *Mining and Industry*

What is it about the Mid West region that has yielded rich resources for thousands of years? Explore the unique landscape of the Mid West from the creation of the earth billions of years ago to the mining development occurring in the region today.

Gallery Gazing

A E *Viewing in Context*

Interpret how objects, media, lighting, text, images and music are used by museums to appeal to audiences.

Self-guided Programs

H&PE S S&E

Please visit our website for our range of self-guided topics and resources.



For more information on our programs visit us online: museum.wa.gov.au/education



Come on a journey of discovery at the *Western Australian Museum – Albany* and share in the beauty and natural abundance of our *Kinjarling* – ‘place of rain’ and home of the Minang people.

Meet live local Long-necked Turtles, different species of frogs, King’s Skinks and varied bird life within our grounds, the site where Minang people fished and cooked and Western Australia was first proclaimed. Learn about our rich maritime history, threatened species, traditional Minang life and the amazing marine habitats of our southern seas.



Western Australian Museum – Albany
Residency Road, Albany

Open 10:00am - 4:30pm on school days

Museum Highlights

- Investigate the history of the land, from local Minang creation stories to scientific theories of geological formation.
- Discover the rugged beauty of the Albany region, explore the vibrant biodiversity of its flora and fauna and be immersed in its rich social history.
- Visit our *Discovery Centre* and see live turtles, insects and unusual marine life or go fossil hunting.
- Explore the bush tucker garden and learn how abundant bush food is or sit in the frog garden or our new lizard garden to meet local wildlife.



The Education Team at the *Western Australian Museum – Albany* have developed a range of unique and engaging education programs for primary classes and learning opportunities for secondary classes.

Explore our array of exhibitions and artefacts with our Education Officers and Minang elders. Discover bush foods and learn about animal and marine habitats. Experience the reality of life in days past as you become a convict; or meet Mr or Miss Crabapple, our old-time school teachers.

Our engaging and interactive programs provide links between the Museum's collections, your classroom program and the curriculum.



Excursion Options

Facilitated Programs:

Our facilitated education opportunities are led by our Education Officers and Minang Noongar presenters. Session times can be negotiated at the time of booking. We suggest you allow additional time to explore our newly refurbished galleries in the *Residency Building*.

Self-guided Experiences:

Visit our galleries in the *Residency* or *Eclipse* buildings at your own pace or immerse your students in the activity-rich *Discovery Centre*.

Program Costs

Facilitated Programs:

\$2.00 to \$5.00 per student (including GST).

Self-guided Experiences:

A minimum donation of \$10.00 per school class is preferred.

Further Information

Please refer to our website for information and resources relating to school excursions.

museum.wa.gov.au/education

Excursion Bookings

Western Australian Museum – Albany
Residency Road, Albany

(08) 9841 4844

albany@museum.wa.gov.au



Programs Overview

Albany

K - 3 Early Childhood

Meet the Locals*

S S&E *Biodiversity Environment*

Get up close and personal with our native wildlife. A highly interactive introduction to the biology, habits and dreaming story of a creature of your choice: pelican, shingle-back lizard, kangaroo, dibbler, magpie, dolphins and whales, chuditch, freshwater turtle and willy-wagtail.

Beach Walk Discoveries*

S S&E *Biodiversity Environment*

Join us at the beach to discover what might be washed up – animal, plant or man-made? You will be surprised by the unique and unusual sea life.

Pirate Mania

S S&E *Maritime History*

Prepare yourself for some skulduggery. Hunt for treasure, swab the decks and say "Aaargh!"

We Dig Dinosaurs*

S S&E *Palaeontology*

Dig, chisel and discover hidden fossils. Learn how to survey a grid and identify your finds. Graduate as a junior palaeontologist, and you might take home a real fossil for your school!

Farm Life (available Term 3 and 4)

S&E *WA History*

Go back in time to experience life on WA's first farm at Albany's Strawberry Hill Farm.

4 - 7 Middle Childhood

Look What They've Done to My Mummy!

S S&E *Ancient History*

Discover the mysteries of Ancient Egyptian art of mummification.

Caring for Boodja* (Land)

S S&E *Aboriginal Culture*

Discover how the Minang peoples of the south coast of Western Australia provide for their needs and sustained their environment.

Who Dunnart?*

S *Biodiversity Environment*

Use forensic science to solve our wildlife murder mystery.

Merinj for Coolangar* (Food for Children)

S S&E *Aboriginal Culture Science and Technology*

Discover how Minang children learnt about lore, hunting skills and the six seasons.

Crabapple's Classroom

S&E *WA History*

Discover what school was like for your great-grandparents.

Sydney to Sound

S&E *Maritime History Maritime Archaeology*

Live the life of a convict sent to King George Sound to help start the first European settlement of Western Australia.

The First Farm (available Term 3 and 4)

S&E *WA History*

Experience life as an early settler at the Strawberry Hill Farm.

8 - 10 Early Adolescence

Gallipoli – The Shared Experience*

S&E *WA History*

Who was Ataturk and why did he write a message to the mothers of fallen ANZAC troops? Experience Gallipoli from the voices of ANZAC and Turkish soldiers.

Other Opportunities for Secondary Schools

An exciting range of programs developed especially to celebrate The United Nations declared *International Year of Sustainable Energy for All* will be on offer at the *Western Australian Museum - Albany*. Watch out for our National Science Week Programs exploring Energy Evolution, check out the website for updates.

11 - 12 Late Adolescence

Gallipoli – The Shared Experience*

S&E *WA History*

Who was Ataturk and why did he write a message to the mothers of fallen ANZAC troops? Experience Gallipoli from the voices of ANZAC and Turkish soldiers.

We also invite secondary educators to make use of the Museum's local and visiting experts (such as biologists, geologists, anthropologists, historians and Noongar Elders) to help enhance your classroom program.



Bring the Museum into your classroom!

Outreach Programs

All curriculum-based education activities marked with an * are available to schools as part of our Outreach Programs.

Loan Collection

The *Western Australian Museum - Albany* has a fascinating collection of items available for loan.

For more information on our programs and outreach opportunities visit us online:

museum.wa.gov.au/education



Visit the *Western Australian Museum – Kalgoorlie-Boulder* and explore the living conditions, cultures and social lives of the people living on the goldfields.

The Museum is conveniently located on Hannan Street, and not far from one of the richest gold deposits in the world.



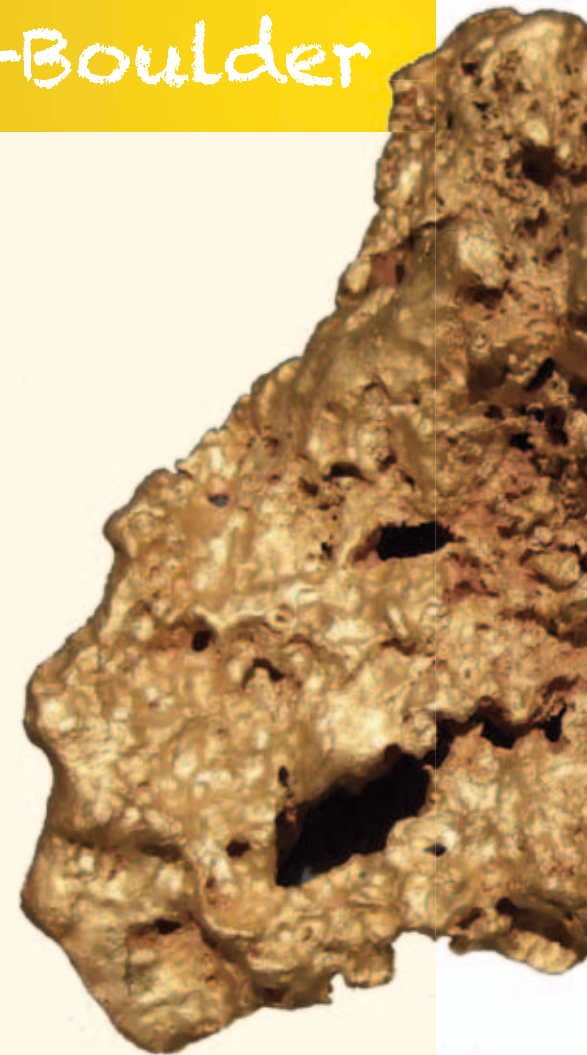
Western Australian Museum –
Kalgoorlie-Boulder
Hannan Street, Kalgoorlie

Open 10:00am - 4:30pm on school days



Museum Highlights

- Find out how mining has played a large part in the development of the region and the state since gold was discovered in the Eastern Goldfields in 1887.
- Be charmed by our displays of gold nuggets and other gold products in the *Gold Vault*.
- Explore our range of unique buildings and displays such as a 1930s *Miners Cottage*, *The Golden Mile* and *Murchison Timber Supply Company Office*, the *Woodline Police Office* and the *British Arms Hotel*.
- See the *Sandalwood Camp* and discover how the early sandalwood pullers lived a very different lifestyle while harvesting this luxurious and valuable export product.
- Don't miss the splendour of mining entrepreneur Claude DeBernale's Perth office and Kalgoorlie boardroom from the early 1900s.



Enhance your visit to the *Western Australian Museum – Kalgoorlie-Boulder* with one of our engaging education programs, developed by our experienced Education Team.

Our education programs include hands-on experiences which immerse students in the life of the early goldfields. Students will enjoy participating in old-fashioned games, helping with household chores and exploring innovative use of resources. Classes wishing to step further back in time can explore the discovery and recovery of extinct creatures big and small.



Teachers may also like to take advantage of the opportunity to meet with our Education Officer for an overview of the programs and resources available to supplement your teaching program.



Excursion Options

Facilitated Programs:

All facilitated education programs are led by an Education Officer and require booking in advance.

Self-guided Experiences:

Visit the Museum and explore the galleries at your own pace. Our Education Officer is happy to discuss ideas for your visit. Bookings are essential.

School Incursions:

The Education Officer at the *Western Australian Museum – Kalgoorlie-Boulder* can deliver facilitated programs within your classroom using Museum materials.

Program Costs

Facilitated Programs:

\$5.00 per student (including GST).

Self-guided Experiences:

Entry by donation.

Further Information

Please refer to our website for information and resources relating to school excursions.

museum.wa.gov.au/education

Excursion Bookings

Western Australian Museum –
Kalgoorlie-Boulder
17 Hannan Street, Kalgoorlie

(08) 9021 8533
eomog@museum.wa.gov.au



K - 3 Early Childhood

Life In The Early Goldfields

A E S&E *WA History*

Experience the early goldfields lifestyle through activities such as washing clothes and playing old-fashioned games.

Innovative and Hand Made (Years 2 - 3)

S&E T&E *WA History*

Discover how everyday items were reused and given another lease on life in the late 1800s. Have a go at making your own toys and other useful things.

We Dig Dinosaurs

S *Palaeontology*

Become a palaeontologist for the day! Brush, chip and sort your way through a variety of hands-on activities, just like a real fossil finder.

Woodland Wonders

S S&E *Biodiversity Environment*

Meet some of Australia's animals and explore the importance of the Great Western Woodlands and how important it is to protect it for future generations. Using puppets, children are able to use story telling to stimulate their curiosity about the environment.

Let's Make Christmas

A S&E *WA History*

Enjoy a trip back to the days of early Kalgoorlie as you get ready for the Feastive Season with home made decorations and preparations (available November and December).

4 - 7 Middle Childhood

Life In The Early Goldfields

A E S&E *WA History*

Experience the lifestyle of the early goldfields by joining in activities such as washing clothes and playing old-fashioned games.

Innovative and Hand Made

S&E T&E *WA History*

Discover how everyday items were reused and given another lease on life in the late 1800s. Have a go at making your own toys and other useful things.

Fossil Forensics

S *Palaeontology*

Analyse clues to deduce how an extinct marsupial predator died, and what it might have been like when it was alive.



8 - 10 Early Adolescence

Life In The Early Goldfields

A E S&E *WA History*

Discover the lifestyle of the early Goldfields. Rediscover how thrifty and clever the people were, making best use of what they had.

Loan Collection

The *Western Australian Museum – Kalgoorlie-Boulder* has a collection of items available for loan to support your education programs. Please contact our Education Officer for further information.



For more information on our programs visit us online: museum.wa.gov.au/education



Payment

You may pay using cash or cheque on the day of your visit, and a receipt will be issued. Alternatively you may provide a School Purchase Order and an invoice will be sent to you.

Adult supervision:

We recommend the following ratios, with a mandatory minimum of two supervisors per school supervisory team.

- Years K-3, minimum 1 adult to 6 students.
- Years 4-12, minimum 1 adult to 10 students.
- Tertiary, minimum 1 supervisor with the group.

The responsibility of children remains with the teaching staff from the visiting school or educational organisation. Please ensure that each adult supervisor is aware of their role in regards to the behaviour and safety of your students.



Excursion Management Plan

Please visit museum.wa.gov.au/education for our comprehensive Excursion Management Plans which include information on emergency procedures for each site.

Access

Please notify our staff if any students have specific access requirements, including students in wheelchairs.

All images are of the Western Australian Museum's collections, exhibitions and education programs.

© Western Australian Museum 2012

